

# DISTINCTION

## DOORS THAT LAST

---

*10 Year Warranty*



Composite Door

The World's No.1 Entrance Door  
Now available in Australia

# What is Fibreglass Composites?

**FIBERGLASS** is composite materials consist of two or more physically distinct and mechanically separable components called reinforcement and resin. These two components can be mixed in a controlled way to achieve optimum properties, which are superior to the properties of each individual component. Composite materials have been widely used in the wind turbine blade, aviation and space industries due to the following advantages: high strength, light weight properties improved thermal properties, moisture resistance, UV stability, heat and fire resistance properties.

Manufacturers, designers and engineers recognize the ability of fibreglass composites materials to produce high quality, durable and cost effective products. Composites solve problems, raise performance levels and enable the development of new innovations.

## Uses of Fiberglass

Fiberglass components are used in a variety of construction applications, in buildings, on land and sea, which all capitalize on the inherent qualities of strength, durability, and moisture resistance. Automotive bodies and bumpers are exposed to climate extremes and abusive wear and tear. Boats are completely made of fiberglass because of its ability to withstand the elements of heat and cold, and it is corrosion resistant. Steel decks on bridges and highways are being replaced by fiberglass – strength of steel, resists corrosion, light weight and durable. Residential applications include shower stalls, hot tubs, ladders, doors and windows.

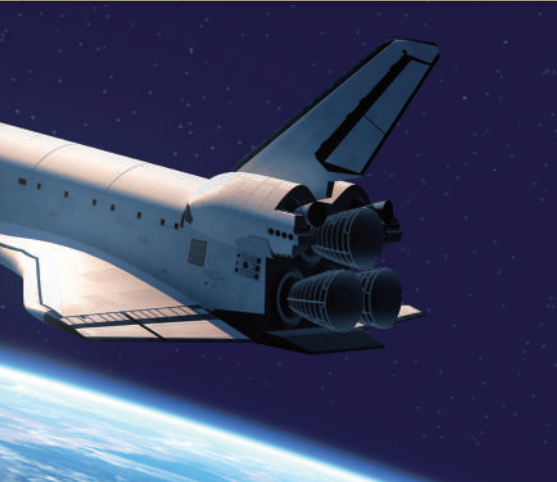
## Sound Transmission

At highways and roadways, fiberglass sound barriers are often located between the roadway and residential areas as a stable, durable noise buffer.

Fibreglass doors can reduce up to 5 times the transfer of sound in comparison to a solid timber door.







## Moisture Resistance

Due to the seamless fabrication of the fiberglass doors, moisture is unable to penetrate the surface substrates eliminating the concerns of rot, warping and improving the weather ability characteristics with total protection against termites and other rodents.

## Strength, Impact Resistance and Security

In ASTM and international testing, fiberglass performed twice as strong as aluminum and eight times stronger than vinyl. Fiberglass composite ranks high in impact testing, because it withstands impacts without deformation. This is important on the job site when dents and damages may inadvertently occur.

## Commercial Fiberglass Doors

Today fiberglass doors are widely used in chemical plants and water treatment facilities. Fiberglass doors will soon be the primary door specified in hotels, offices, restaurants, hospitals and many commercial buildings. Fiberglass doors are strong, fire resistant, chemical resistant, aid in sound transmission and carry a 10 year warranty.

*Fiberglass doors satisfy all architectural driven requirements; from aesthetics and cost, to performance and maintenance.*

# Design Features

*Imagine a door that retains the warmth, beauty and look of real wood yet will not dent, rust, bow, warp, crack, splinter, or scratch.*

Distinction Doors' unique engineering results in a door that is built to last a life-time. Some of our quality features include:

Our Distinction Doors offer full-length composite stiles which provide complete waterproofing for the door's insulation, as exclusive to the Distinction Doors. Using the superior performance of composite stiles, these stiles will not splinter like wood or delaminate like steel.

## High-strength engineered composite bottom rails

The Distinction Door's high-strength engineered composite rail prevents moisture from seeping into the door. This rail also allows the Distinction Door to accommodate a range of door seals.

## Environmentally-sound polyurethane foam core

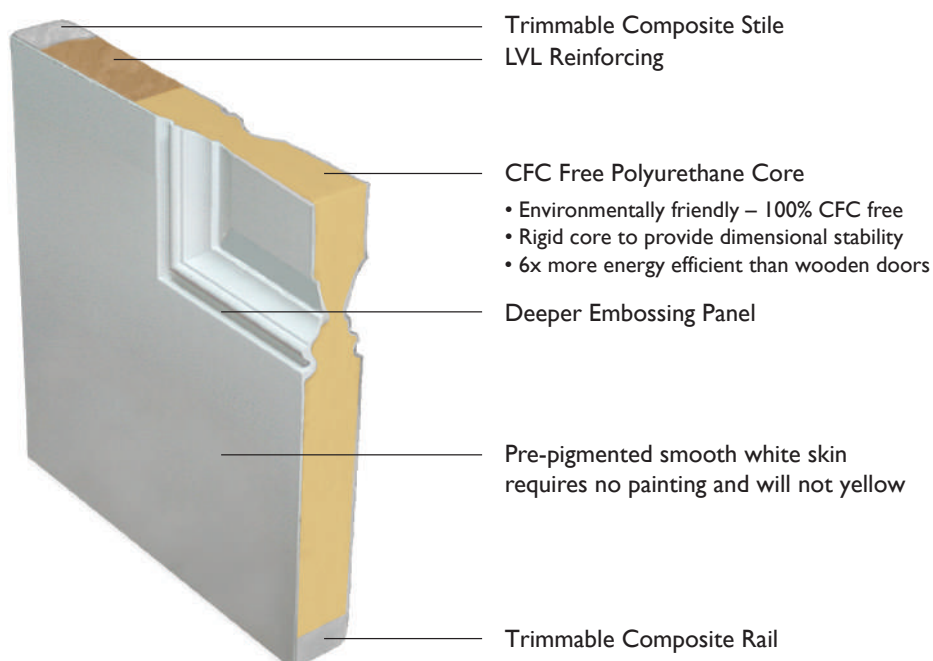
Though some other fiberglass door manufacturers still use HCFC foam, we are proud to offer a door which is completely CFC-free in conformance with environmental standards. Our advanced polyurethane core provides superior thermal performance and enhances the door's soundproofing. The combination of these factors has created a door which serves to protect our environment by avoiding harm to the ozone layer and by offering better thermal insulation to your home. Our composite door can add up to 5 times greater insulation properties than a solid timber door.

## Deep-profile fiberglass skins

Our deep-profile compression molded fiberglass skins create a stronger dimension, enriching the door's rich oak appearance.

## Product warranty

We offer a 10 year Limited Warranty on our Distinction Doors Wood Grain Doors and a 10 year Limited Warranty on our Distinction Doors to original purchasers.





# Utility Flush Doors 35mm / 40mm



## Door Size

- Door Width available in:  
720/820/920/1020/1200mm
- Door Height available in:  
2040/2340mm
- Door Thickness available in:  
35/40mm
- Trimability  
25mm all around



Smooth



Woodgrain



White Woodgrain



Half Lite white grain



Half Lite Smooth





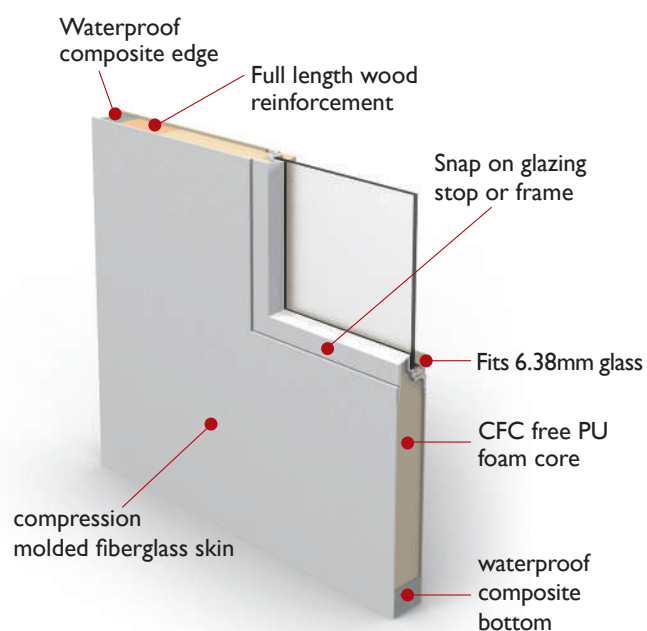
# Vision One Lites

## • Vision One Lites

Distinction Doors have specifically developed the Vision One Lites external door range in response to the need to have a highly durable, energy efficient and stylish door suited to our Australian weather conditions.

Aesthetically pleasing Vision One Lites doors provide a sleek, clean look for your fiberglass door, while giving you all the same durability and performance features of our standard fiberglass doors.

- Available in both wood grain & pre-finished smooth white
- No screw cap plugs or traditional glass insert frames to deal with
- Sleek snap-on internal glazing frame to hold glass in place
- Exterior frame molded design is another example of our advanced technology
- Impressive construction offers improved strength and performance
- Increased light brightens up any room
- Additional internal structural support on both sides of the door



## Clear Glass

- Door Width Available in :  
410/520/620/720/820/920/1020/1200mm
- Door Height Available in:  
2040mm

## Translucent Glass

- Door Width Available in :  
410/520/620/720/820/920/1020/1200mm
- Door Height Available in:  
2040mm



One-lite  
woodgrain



One-lite  
Smooth

\* SPECIAL ORDERS AVAILABLE ON REQUEST \*







# Black Door Collection

## • Available Design



ROMA



SYDNEY



MELBOURNE

### ROMA/SYDNEY/MELBOURNE

Door Widths Available:

820/920 x 40mm

Door Heights Available:

2040mm

Glass Type Available:

Clear/Translucent

Trimability:

25mm all around



Hobart

### Hobart

Door Widths Available:

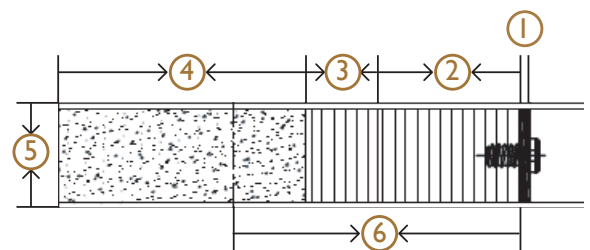
820/920/1020/1200 x 40mm

Door Height Available:

2040mm

Trimability:

25mm all around



- ① Steel--Thickness 3mm
- ② LVL--Thickness 50mm
- ③ LVL--Thickness 25mm
- ④ PVC Composite--Thickness 86mm
- ⑤ Door Thickness-- 40mm
- ⑥ Minimum Stile--100mm

# Baltic Range





## Baltic Range



BALTIC 1 LITE



BALTIC 4 LITE



BALTIC 5 LITE

### Woodgrain Walnut

Available widths : 820/920/1020/1200mm

Available Heights : 2040/2340mm



BALTIC 1 LITE



BALTIC 4 LITE



BALTIC 5 LITE

### Woodgrain White

Available Sizes : 820/920/1020/1200mm

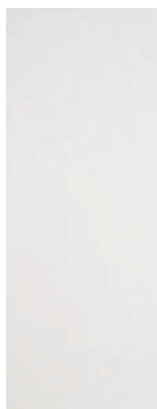
Available Heights : 2040/2340mm

- \* Glass Available: Clear/Translucent
- \* Trimmability 25mm all around
- \* Lock Block Board Both Sides

# Solid Flush Doors



White grain



Smooth

## SIZE

Widths Available:

720/820/920/1020/1200mm

Thickness Available:

35/40mm

Heights Available:

2040/2340mm

- \* Trimmability: 25mm all around
- \* Lock Board Both Sides
- \* Can be PAINTED or STAINED



# Malborough Range

## Distinction Composite Doors are the best on the market

### Modern Simplicity

starts at the entrance.

The routed design of your door can open up a new world of possibilities. Your house deserves the inspiration of a new design which will set you apart from your neighbours.

*"Crafted for  
Australian Homes"*

- Features & Benefits

- \* LVL styles and rails for superior stability. No warp or Bowing
- \* Solid fiberglass resin – clean & tidy, which can be trimmed or rebated
- \* Polyfoam resin engineered core for high insulation
- \* Better thermal r-rating than aluminium and timber doors
- \* High impact surface coating that can be painted or stained
- \* 10 year warranty

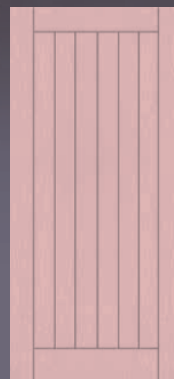
- Widths Available:  
820/920/1020/1200mm

- Heights Available::  
2040/2340mm

Woodgrain/Walnut Available  
Smooth/White Grain Available



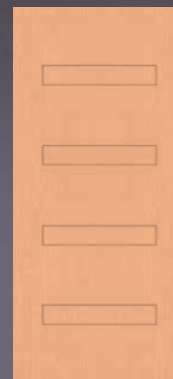
COTTAGE



HOMESTEAD



RANCH



VILLA

## KEEPING WARMTH IN...AND DRAUGHTS AND BREEZES OUT!

At first, the number of different doors on the market can be bewildering. Where do you start? How can you be sure you're making the right choice? It's simple. You need to think about what you need from a door then look at how it measures up against what's out there.

Then again, you could simply choose a composite door from Distinction Doors. Why? Because against every criteria, a Distinction composite door more than makes the grade.

A Distinction composite door has been designed to be both beautiful and practical.



Petrie



Aspley



Chermside



Warner

## Sizes Available:

- Widths Available::  
820mm
- Height Available:  
2040mm

- \* White Grain
- \* Woodgrain Walnut



## Stable Doors



The Stable door is the ideal solution for a back door, yet is the perfect choice for a front door too. You can open the top to bring light into your home while still keeping children in – or animals out!



### Sizes Available:

2040 x 820 x 45mm

2040 x 920 x 45mm

Woodgrain Only

Lock + Hardware included



# Why Distinction Composite Doors Are The Best On The Market



## EXCELLENT WEATHERPROOFING

A Distinction composite door has water resistant polymer composite rails that protect it's core. This means it won't suffer from water absorption which can lead to skin delamination and cause functional problems that lesser products have. Your door will keep the weather at bay and stay looking good for longer.

## SUPERB SOUND INSULATION

A Distinction composite door has a weighted noise reduction of 31 decibels. It means you can be sure your new door will keep outside noise to a minimum, helping to make your home the heaven you want it to be.

## UNPARALLELED SECURITY

All Distinction Composite Door offers the ultimate security. Thanks to its superior manufacturing process together with strict quality control procedures. A Distinction Composite Door has passed various security accreditations including the official UK Police designing out crime certification (PAS 24: 2012)

## STUNNING AESTHETICS

The woodgrain finish on a Distinction composite door was developed from oak tree grain, creating a beautifully authentic appearance. Unlike lesser doors, you'll find the same woodgrain effect and moulding design on the slim glazing cassette too, giving a seamless, elegant finish and impressive kerb appeal.

## LOW MAINTENANCE

Everything about a Distinction composite door is designed to be easy to maintain, including the triple glazed insulated glass unit which encapsulates the delicate decorative glazing between two panes of clear glass, protecting it and making it easy to keep clean.

## EXCEPTIONAL DURABILITY

A Distinction composite door's high impact resistant glass reinforced polyester skin will maintain its pristine appearance in the face of everyday knocks and scratches and beyond. This durability is reflected in the comprehensive manufacturer's structural and surface warranties that come with every Distinction composite door.



# Distinction Composite Door Frames

To have a complete entry door system, it is important to consider material of the door frame. Wood doors and frames are prone to warping, rotting, and cracking, while steel doors and frames can rust and dent. You don't want to install a door that will fail, nor do you want to install a frame that will fail.

Distinction Composite Door Frames are a uniquely formulated and innovative alternative to traditional door frames. They combine the beauty of wood with the strength of steel. The material is durable, long-lasting, and is more energy efficient than either wood or metal. The advanced system can be installed the same way as traditional wood frames with no added hassle. When used together with a fiberglass door, they create an enhanced, impenetrable entrance way.



PA962



PA962



PA965



PA965



PA967



PA967

# Distinction Composite Door Frame



- Completely waterproof, it will not absorb or wick moisture, and prevents warping, rotting, and splitting.
- Frame is not able to be infested with termites at any point along the structure.
- Has twice the screw holding power of traditional wood door frames.
- More versatility in design. Available in various lengths and widths that can be stained as well as painted.
- Maintenance free and energy efficient.

## Frame Decay Comparison



Distinction Composite Door Frame



Traditional Wood Frame



# Distinction Composite Entry System

## *Why Distinction Composite Doors are the best on the market*



**Distinction composite doors**

- 1** Full length composite top and bottom rails enhance the durability and performance of the door by preventing any water penetration, which eliminates the natural cracking found with wood.
- 2** High impact skin with beautiful old world craftsmanship will not split, dent, or rust.
- 3** Full length composite stiles offer non-porous protection that prevents water from seeping into the door, which eliminates the natural cracking that occurs with wood.
- 4** Full length LVL block provides stronger support and a range of doors locks and hardware to be installed on the door to increase security.
- 5** Distinction Composite Door Frames are durable, long-lasting, and enhances the quality and performance of the entryway when used with our fiberglass door.



**Other composite doors**

- 1** Wooden bottom rails allows moisture penetration.
- 2** Shallow embossed skin resembling steel doors, reducing curb appeal.
- 3** Limited length wooden stiles allow moisture to enter creating maintenance issues.
- 4** Average wood lock block of 12".
- 5** Wood frame material will crack or rot over time.

## Distinction Composite Entry System



Maintenance-free smooth white or woodgrain composite entry system offers all the strength and convenience of wood with enhanced properties, providing a moisture and damage resistant product suited for the Australian climate.



# Painting Guide

## Painting Guide: Woodgrain

### MATERIALS NEEDED

- A. Lint-free cloth
- B. Mineral Spirits
- C. Rubber gloves
- D. Masking tape
- E. 10cm bristle brush



## Step 1. Surface Preparation



1. Lay door horizontally on saw horses or a table.
2. Remove all the hardware and mask off anything you don't want painted, such as glass insert.
3. Wipe the door with mineral spirits to clean any dust or residue from the surface. Allow all mineral spirits to dry from the surface before applying paint.
4. Prime the door by applying the primer with 10cm brush in the direction of the wood grain. Follow the manufacturer's directions for drying time before applying topcoat.
5. The primer must be completely dry before applying any finish topcoat.

## Step 2. Painting



1. Apply exterior grade paint with 10cm brush beginning with the panels.
2. It is common practice to paint both stiles the same color as the exterior side of the door. If applying a second coat, follow the manufacturer's instructions for drying time between coats.

### Caution

1. When using stains, mineral spirits, paints, or other hazardous material, always read and follow the manufacturer's instructions. Distinction Doors and Nan Ya Plastics Corp. makes no representations as to the proper use of other manufacturer's products.
2. When working with paints or solvents, make sure the working area is well ventilated.
3. Keep away from heat and flame as materials may be combustible.
4. Paints or solvents may cause skin and eye irritation. Avoid contact with skin and eyes.
5. Keep out of reach of Children.



### NORMAL MAINTENANCE

Even a well-finished fiberglass door will be affected by exposure and weathering from sun, moisture and air pollutants. It is considered normal maintenance to re-apply the topcoat approximately every two years.

# Staining Guide

## Painting Guide: Woodgrain

### MATERIALS NEEDED

- A. Lint-free cloth
- B. Mineral Spirits
- C. Rubber gloves
- D. Masking tape
- E. 3" – 4" soft bristle brush



### Step 1.

1. Lay door horizontally on saw horses or a table.
2. Remove all the hardware and mask off anything you don't want stained such as the glass insert.
3. DO NOT SAND GRAIN FIBERGLASS.
4. Wipe the door with warm soapy water to clean any dust or residue from the surface. Allow door surface to dry completely before applying stain.

### Step 2

#### FIRST COAT

1. Starting at the center of the door, stain one to two panels at a time. Apply enough stain with a 3" to 4" soft bristle brush, or rag. Apply enough stain to fill the door grain. (Refer to the door staining diagram.)

2. With a clean, lint-free 24x24 inch cloth, softly wipe the surface until you reach your desired tone.

TIP: When the rag become saturated with stain, re-fold to work with a less-saturated section. Be sure to use the same rag for the whole door.

3. After all the stain is brushed evenly you may add finishing touches by using a small 1" to 2" brush or cotton swabs.



#### SECOND COAT(if desired)

Allow the door to dry for at least 48 hours, between coats. Repeat as above.

### Step 3 Protective Top Coat

Application of polyurethane top coat with UV inhibitors like ZAR™

Exterior polyurethane, Wood Kote® Fast Drying Polyurethane for exterior applications.

1. After stain has completely dried (48 hours), mix top coat well and apply evenly using a clean dry 2" soft bristle brush or 3" foam brush. Be sure to stop when the grain changes direction.
2. Apply two or three coats of finish, allowing at least 24 hours of drying time between each application.



### NORMAL MAINTENANCE

Even a well-finished fiberglass door will be affected by exposure and weathering from sun, moisture and air pollutants. It is considered normal maintenance to re-apply the topcoat approximately every two years.



## Construction

Every Distinction GRP composite door is manufactured to the highest of standards to ensure it is strong, durable and secure. We have sold over two million doors to date, evidence of the quality and exacting specification we demand.

The door has a perimeter sub-frame of a solid, water-resistant polymer material, which is reinforced with Laminated Veneered Lumber (LVL). A thermoset GRP skin is bonded to this sub-frame and the core of the door is then filled with high density, 100% CFC-free polyurethane foam. Finally, water resistant polymer composite rails protect the core from damage or water absorption.

The door's core is what makes it so thermally efficient and so good at reducing sound. In fact, as you can see from the images on page 6, it is the most thermally efficient door on the market, increasing your home's energy efficiency and saving you money on your energy bills.

The high impact resistant thermoset GRP skin not only keeps your door looking good, it will not expand and contract laterally so your door will not crack or delaminate. All standard solid colours are pre-pigmented and beautifully through-coloured. All other colours are oversprayed with a durable paint that will not peel or crack.

## Technical figures

A Distinction GRP composite door has a wealth of facts and figures that prove its quality :

- achieves BS 6375-1 for weather tightness, air, wind and water
- achieves PAS 24 security standard, a prerequisite for achieving Secured by Design status
- reduces outdoor noise by an average of 31dB
- achieves Global Warming Potential (GWP) score of less than 5
- achieves Ozone Depletion Potential (ODP) score of zero
- meets UK Building Regulations U value requirements of 1.6 W/M<sup>2</sup>K

In other words, everything about a Distinction GRP composite door has been designed to enhance your home for years to come.

## Care and maintenance

Your Distinction GRP composite door has been designed to be easy to maintain. To keep your door clean, prolong the life of the surface finish and protect your warranty, we recommend you wash it regularly using warm soapy water (washing up liquid is ideal) and a soft, lint-free cloth. If you live in a coastal area, in a heavily industrialised area or near a main road, you may need to clean your door more frequently.

## It is important that you DO NOT use any of the following on your door :

- abrasive cleaners or scouring pads
- any type of bleach or solvent (e.g. white spirit, methylated spirit, cellulose thinners, acetone or nail varnish remover)
- any type of adhesives or tack for providing temporary protection or fixing of seasonal or other decorations etc
- high pressure or steam cleaners.



# DISTINCTION

## FIBERGLASS DOOR



### DISTINCTION DOORS

**Display Center**

1/164 South Pine Rd, Brendale QLD 4500, Australia Ltd  
Tel: (07) 31808288



**NAN YA PLASTICS CORP.**

Plastics 2nd Div.

6FL 201 Tung Hwa North Rd. Taipei, Taiwan R.O.C.  
[www.npc.com.tw/english/e-index.htm](http://www.npc.com.tw/english/e-index.htm)